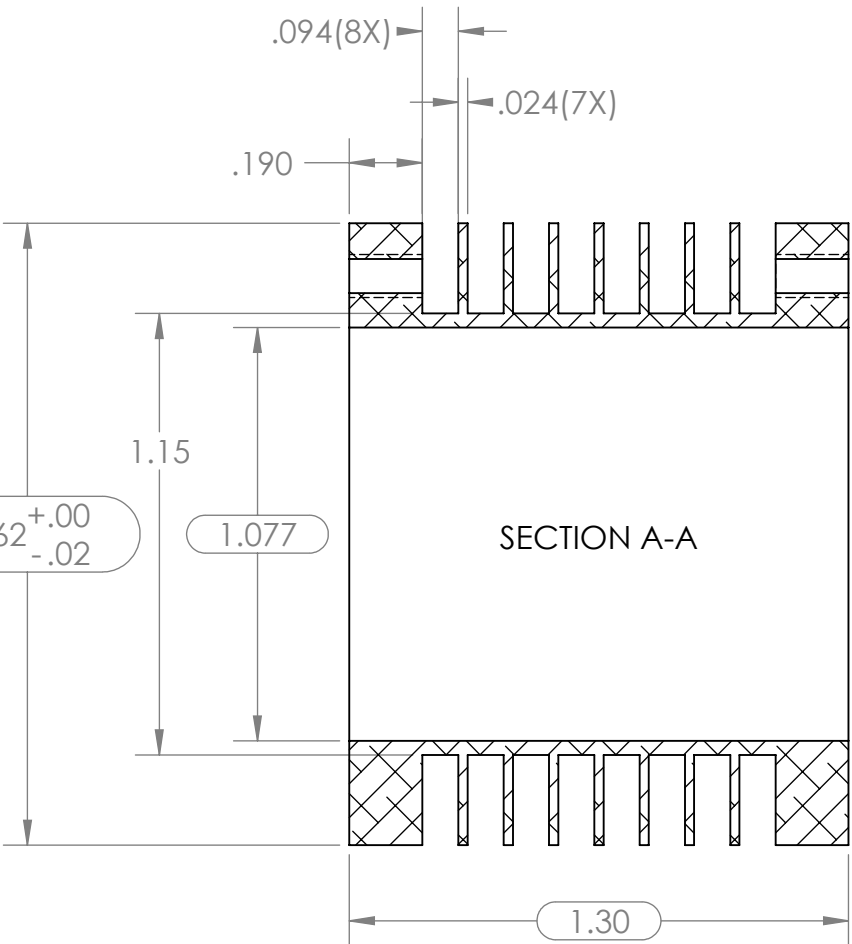
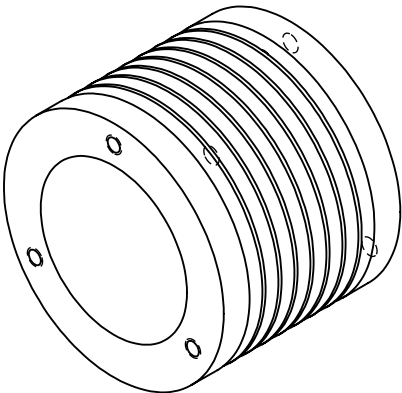
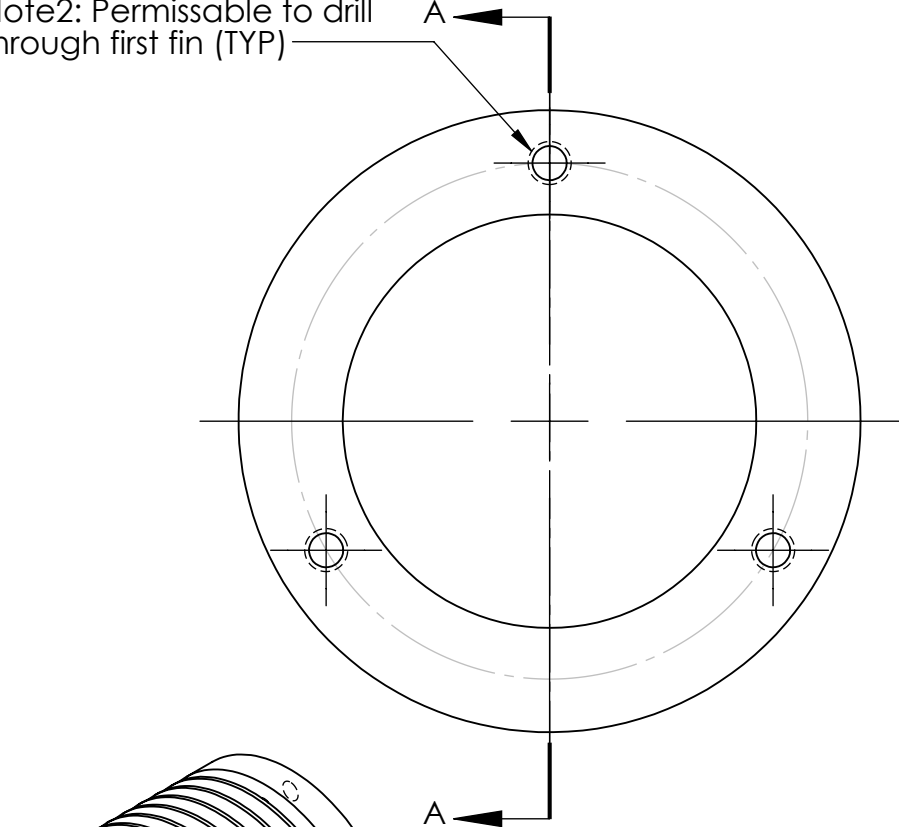


(6X) Equally spaced 4-40 UNC
THRU .19 wall on 1.344 dia B.C.
Note1: No orientation req'd
Note2: Permissible to drill
through first fin (TYP)



PROPRIETARY AND CONFIDENTIAL
THE INFORMATION CONTAINED IN THIS
DRAWING IS THE SOLE PROPERTY OF
THE UNIVERSITY OF PENNSYLVANIA. ANY
REPRODUCTION IN PART OR AS A WHOLE
WITHOUT THE WRITTEN PERMISSION OF
THE UNIVERSITY OF PENNSYLVANIA IS
PROHIBITED.

		UNLESS OTHERWISE SPECIFIED:	NAME	DATE	TITLE: <h1>Heat Sink</h1>				
		DIMENSIONS ARE IN INCHES TOLERANCES: FRACTIONAL $\pm 1/64$ ANGULAR: MACH ± 1 BEND \pm TWO PLACE DECIMAL $\pm .01$ THREE PLACE DECIMAL $\pm .005$ FOUR PLACE DECIMAL $\pm .0005$	DRAWN	CX					2/9/10
			CHECKED	GJ					9/1/11
			ENG APPR.	JF					9/7/11
			MFG APPR.						
		INTERPRET GEOMETRIC TOLERANCING PER:	Q.A.			SIZE DWG. NO. REV <h1>A 201-08 A</h1>			
		MATERIAL 6061 Aluminum	COMMENTS: BREAK ALL EDGES AND SHARP CORNERS.						
		FINISH NONE							
NEXT ASSY	USED ON					SCALE: 2:1 WEIGHT: SHEET 1 OF 1			
APPLICATION		DO NOT SCALE DRAWING							