



Logistics

Locations

Towne 315

lectures (T 3:00-4:20)

Towne 169

machine shop*

labs (R 10:30, R 1:30, F 11:00, F 1:00)

Towne 205

door code: 4-2-19

19 CAD stations

Towne 193 (GM)

Prototrak emulators

Towne 167

laser cutting*

* = training required

Resources

Textbook

Machine Elements in Mechanical Design, 4th ed.

Robert L. Mott

Supplies

consider purchasing: calipers, safety glasses, smock, hand tools

Course Wiki

<http://medesign.seas.upenn.edu>

Staff Email

meam201staff@lists.seas.upenn.edu

Components

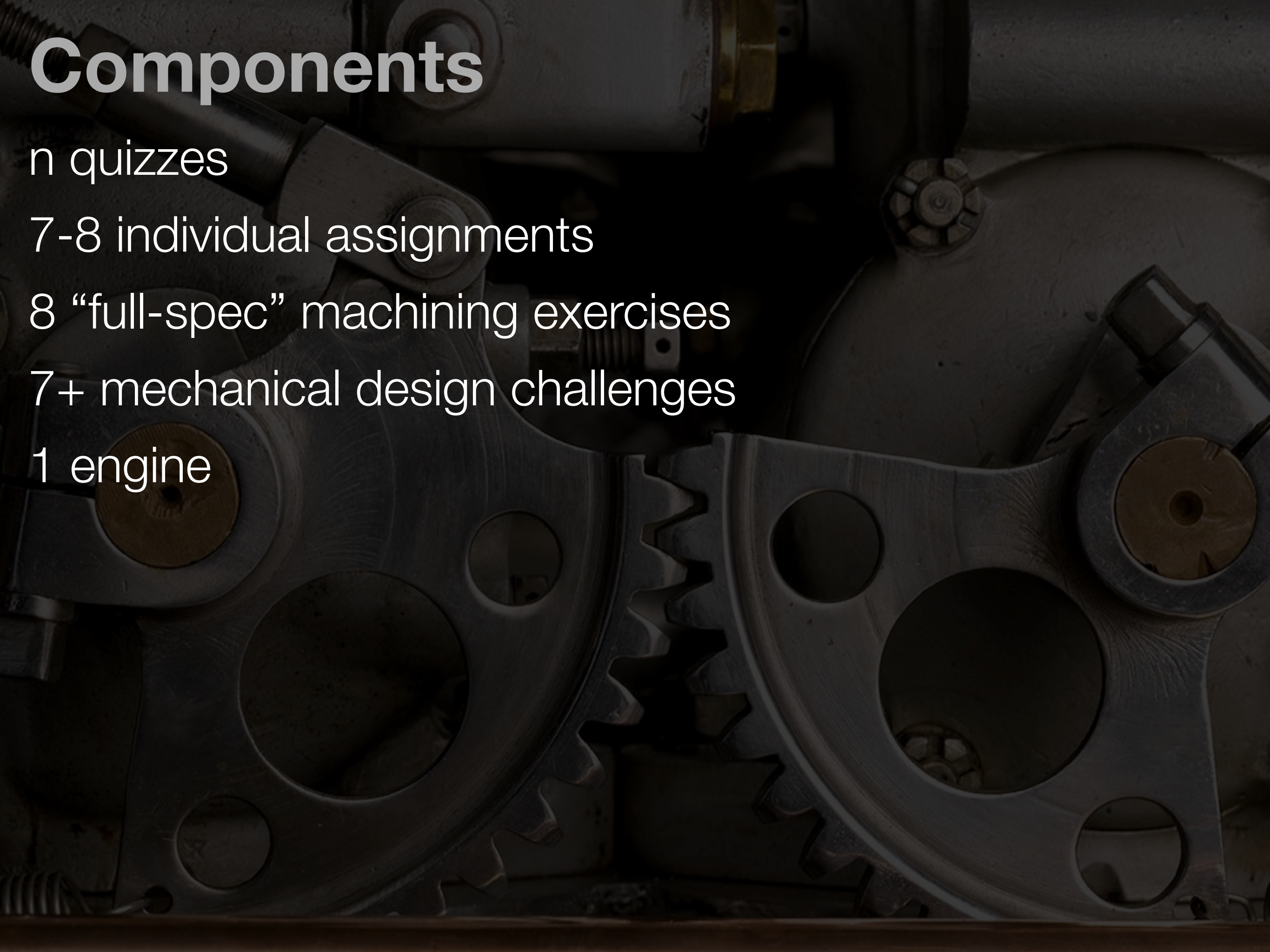
n quizzes

7-8 individual assignments

8 “full-spec” machining exercises

7+ mechanical design challenges

1 engine





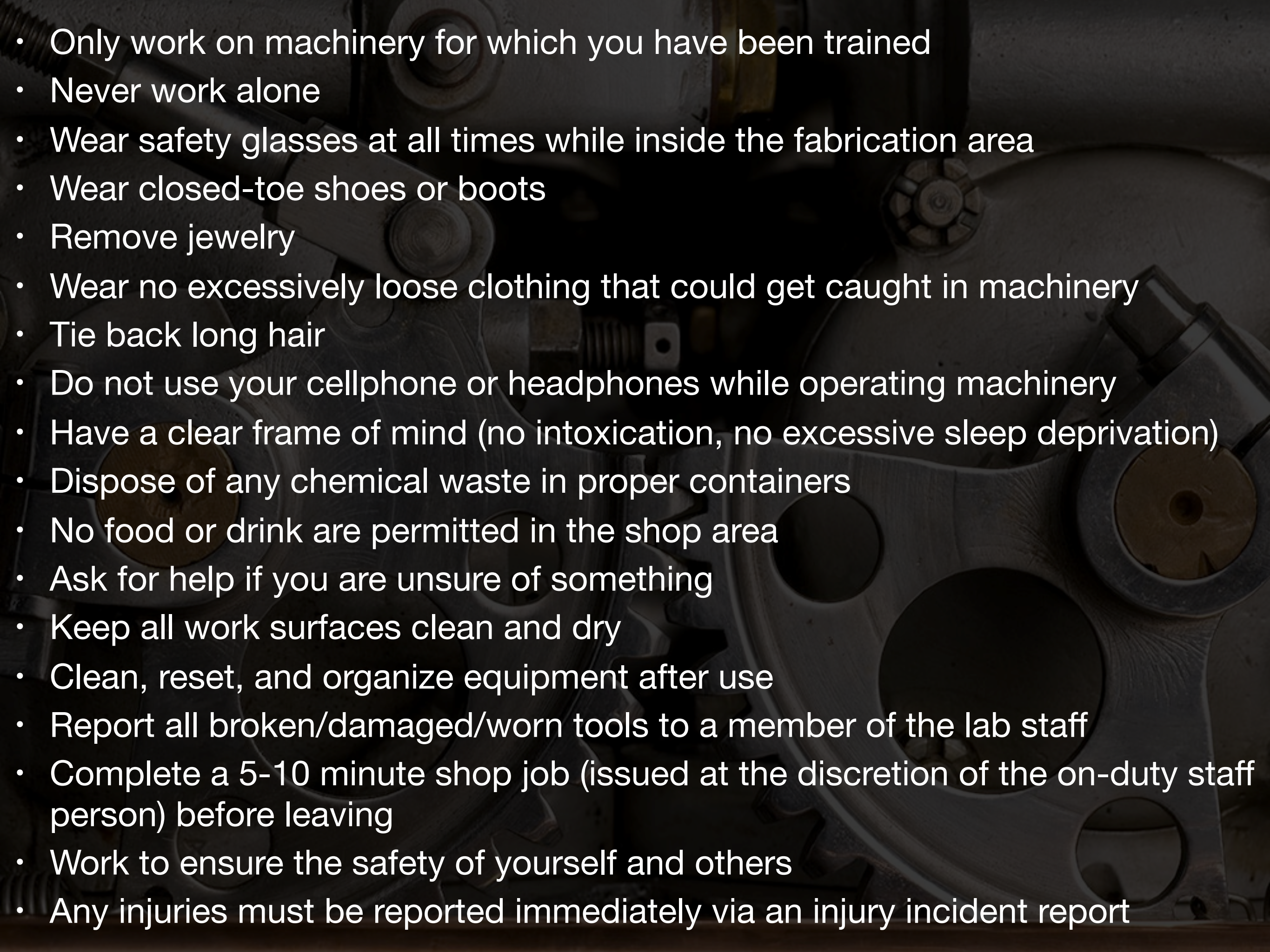
Expectations



The Shop

Machine Shop

University of Pennsylvania

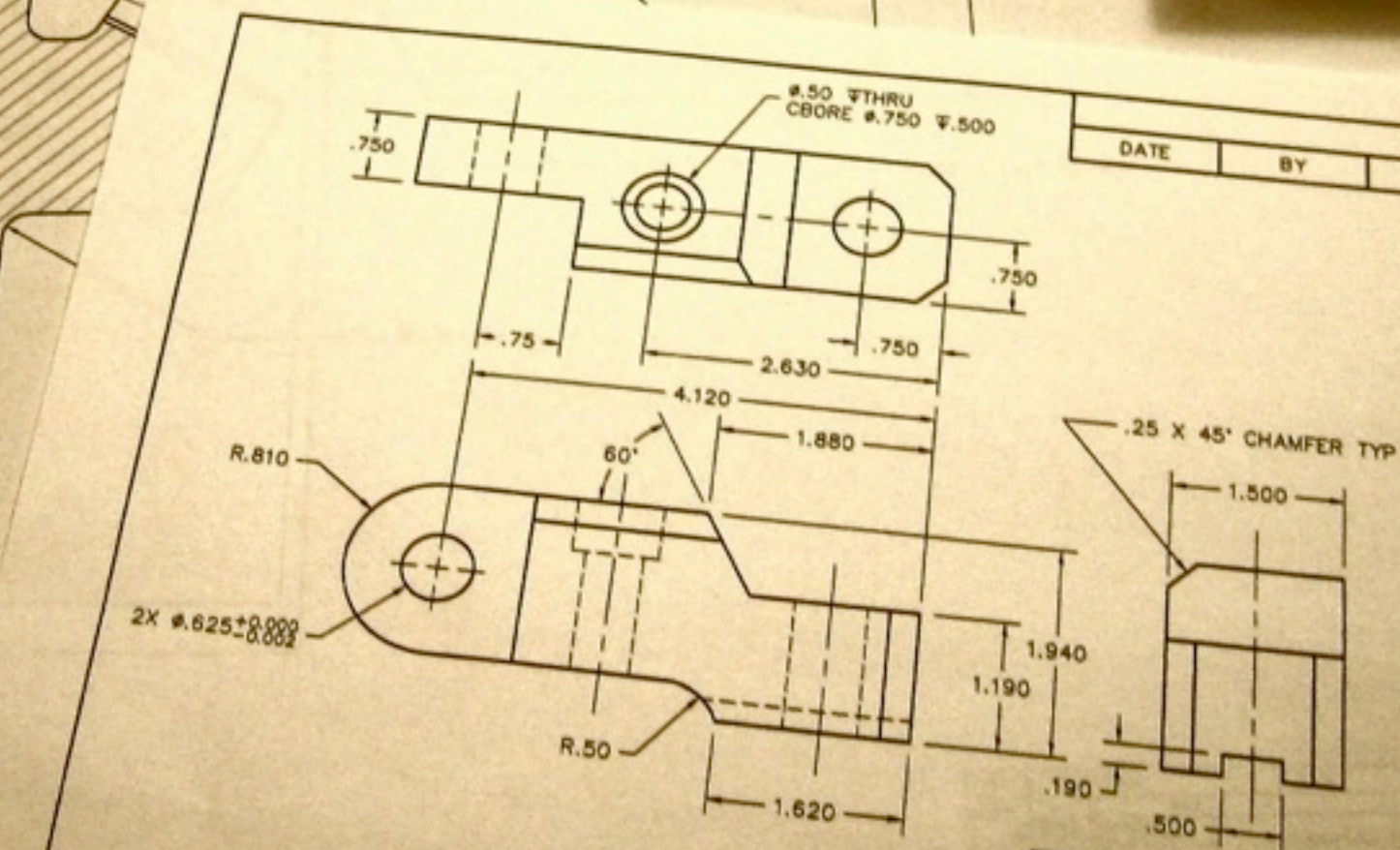
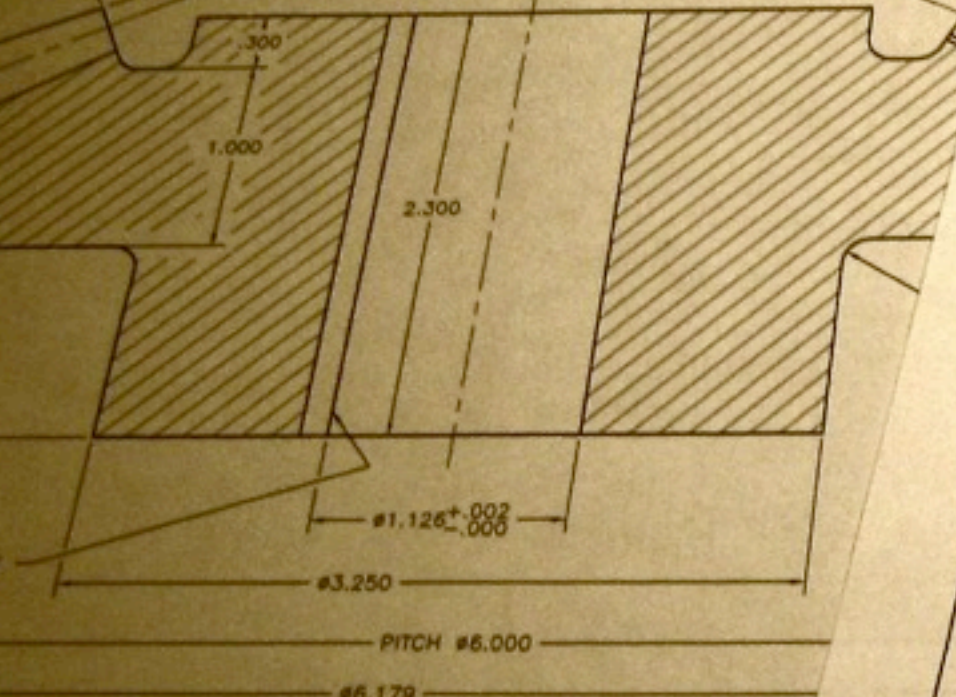
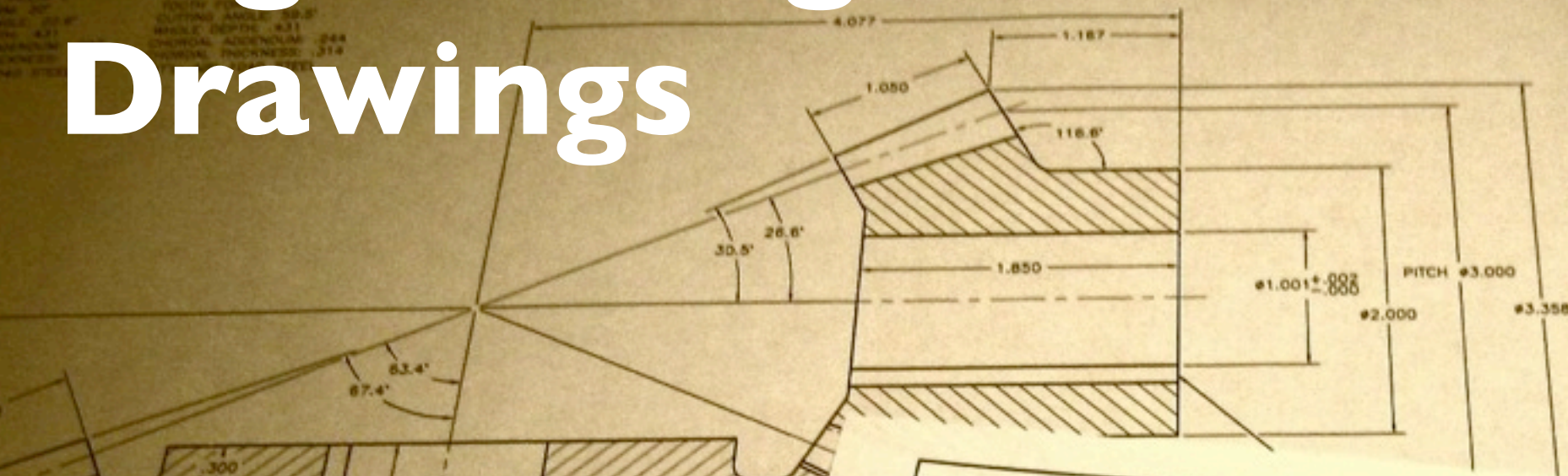
- 
- Only work on machinery for which you have been trained
 - Never work alone
 - Wear safety glasses at all times while inside the fabrication area
 - Wear closed-toe shoes or boots
 - Remove jewelry
 - Wear no excessively loose clothing that could get caught in machinery
 - Tie back long hair
 - Do not use your cellphone or headphones while operating machinery
 - Have a clear frame of mind (no intoxication, no excessive sleep deprivation)
 - Dispose of any chemical waste in proper containers
 - No food or drink are permitted in the shop area
 - Ask for help if you are unsure of something
 - Keep all work surfaces clean and dry
 - Clean, reset, and organize equipment after use
 - Report all broken/damaged/worn tools to a member of the lab staff
 - Complete a 5-10 minute shop job (issued at the discretion of the on-duty staff person) before leaving
 - Work to ensure the safety of yourself and others
 - Any injuries must be reported immediately via an injury incident report

Engineering Drawings

Machinery's Handbook

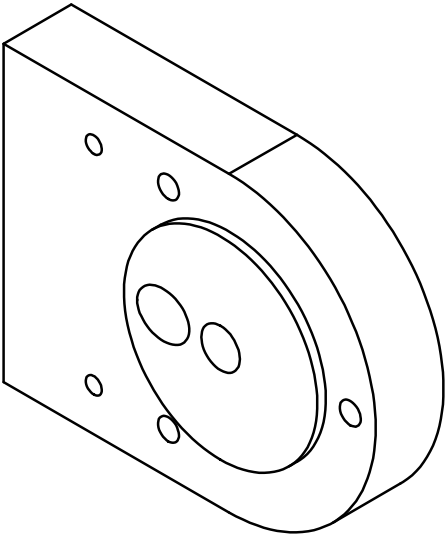
28

Industrial Press



DRWN	BSR	3RD ANGLE PROJECTION	EN
DATE	12/28/2010		
CHKD	12/28/2010	STANDARD TOLERANCES	
MATL	4140	ANGULAR = \pm .50°	
SCALE	FULL	X/X = \pm 1/32	
THIS DRAWING IS PROTECTED BY COPYRIGHT LAWS. ALL DIMENSIONS ARE IN INCHES. DO NOT SCALE DRAWING.		.XX = \pm .010	
		.XXX = \pm .005	
		NOT BE DISTRIBUTED.	

Isometric View



5



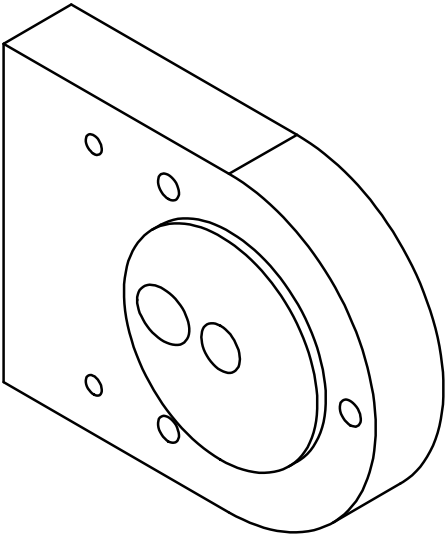
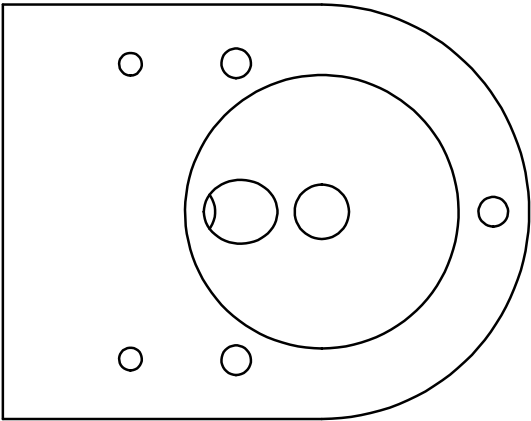
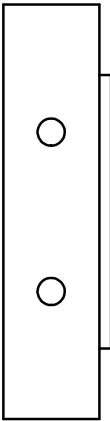
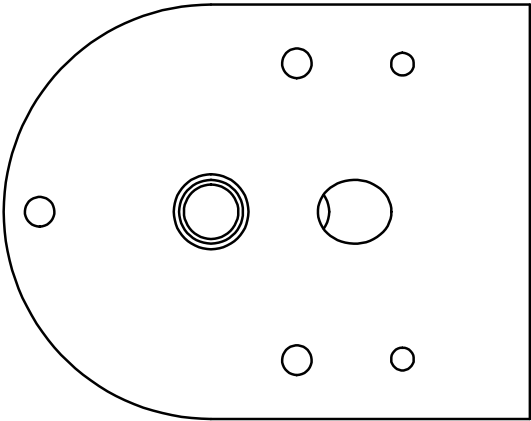
4

3

2

1

Orthographic Projections



5



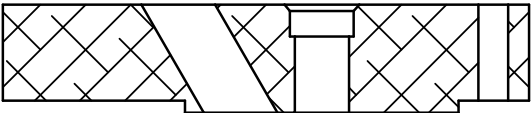
4

3

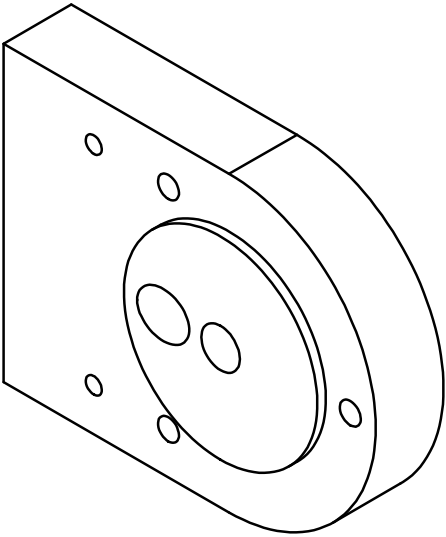
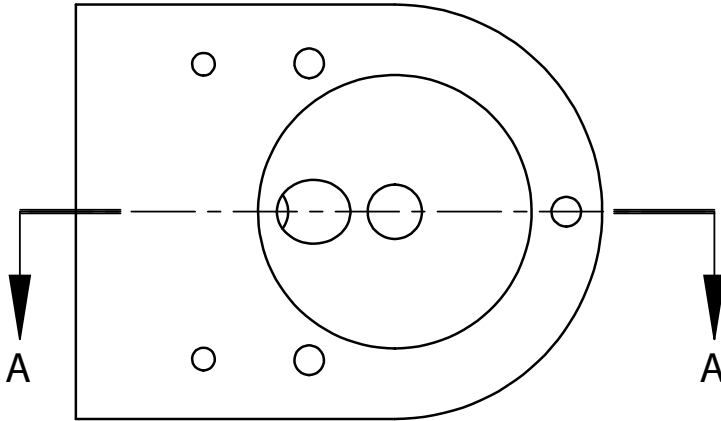
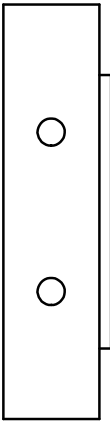
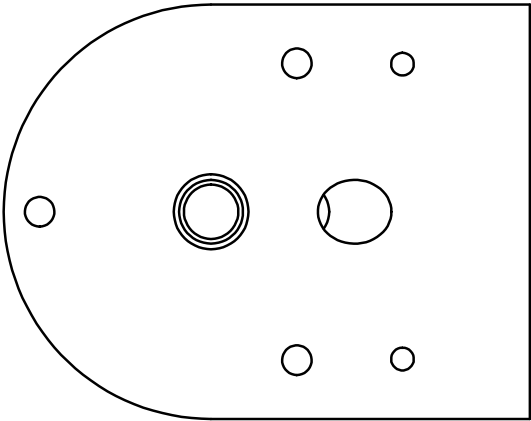
2

1

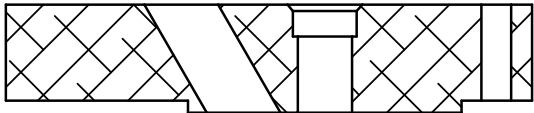
Section View



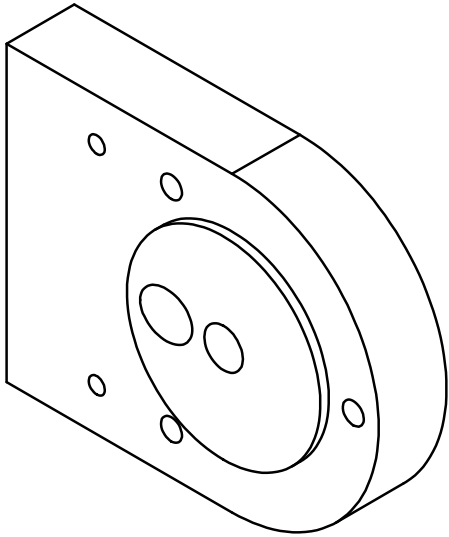
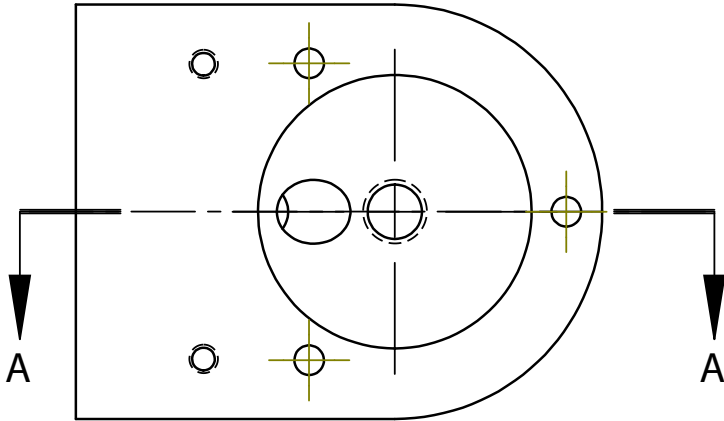
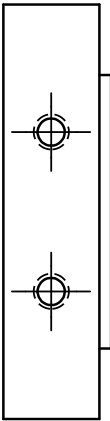
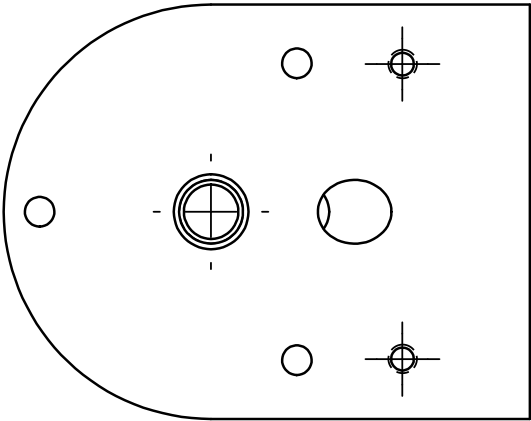
SECTION A-A



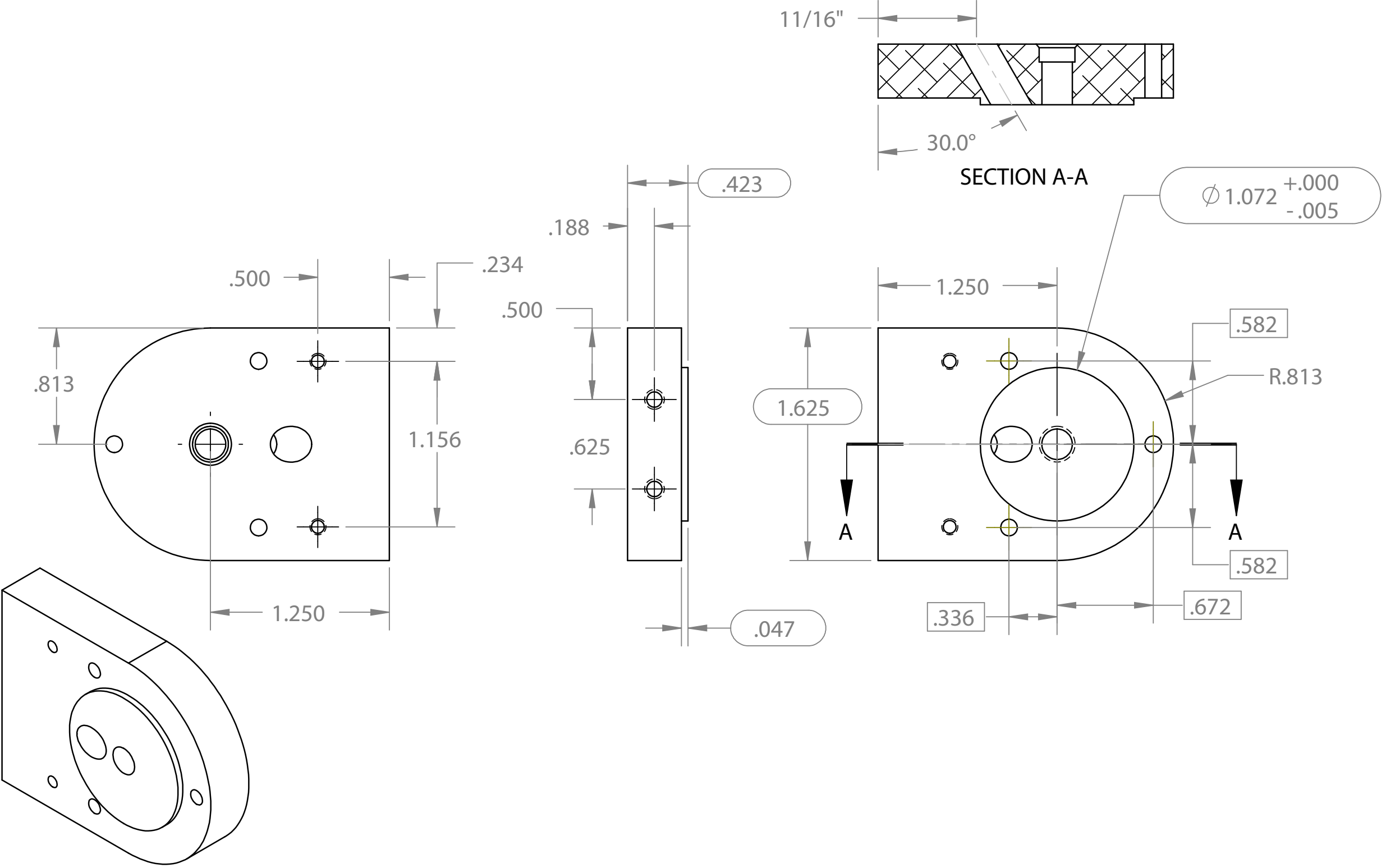
Hole Centers

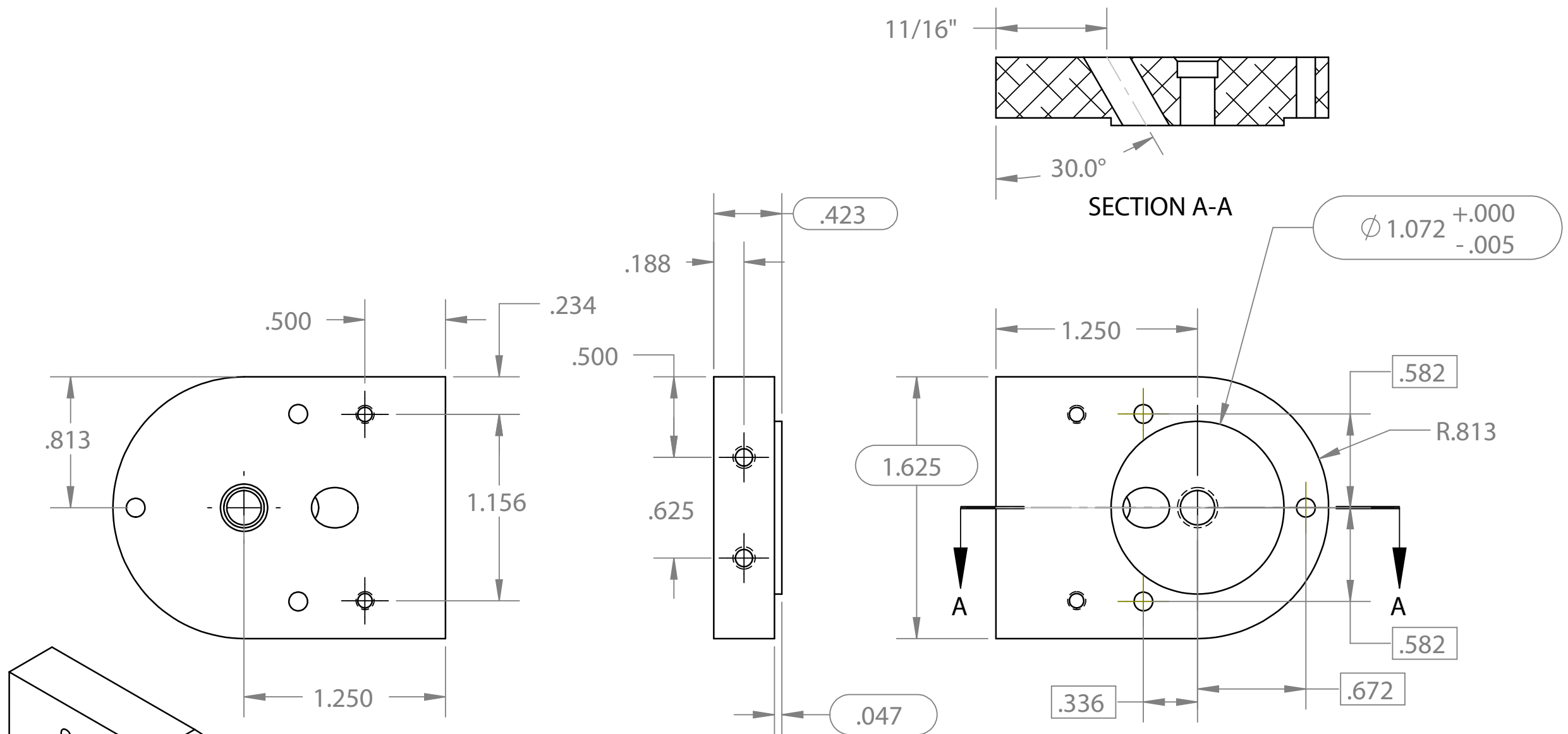


SECTION A-A



Dimensions





UNLESS OTHERWISE SPECIFIED:

DIMENSIONS ARE IN INCHES

TOLERANCES:

FRACTIONAL $\pm 1/64$

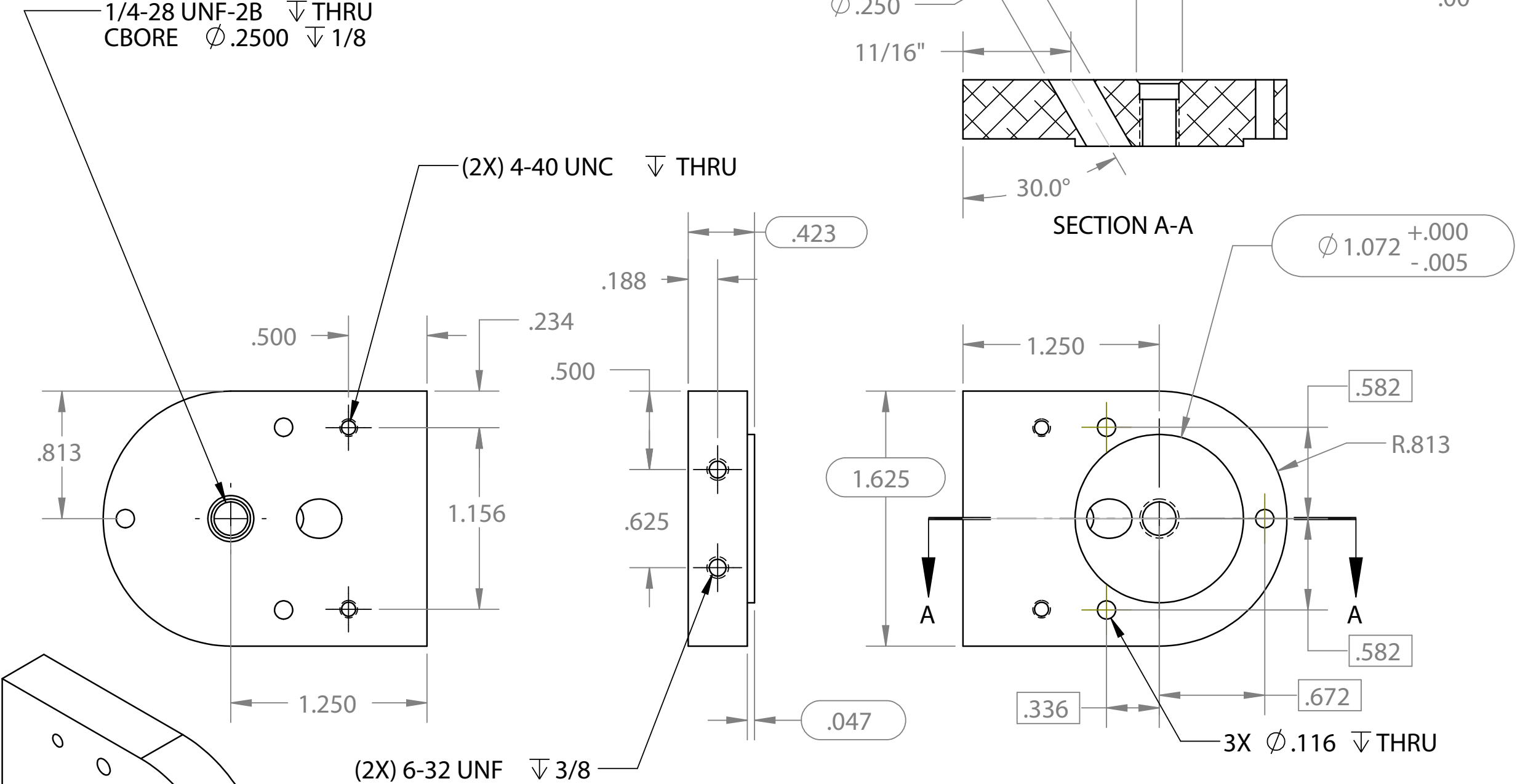
ANGULAR: MACH ± 1 BEND \pm

TWO PLACE DECIMAL $\pm .01$

TWO PLACE DECIMAL	±.01
THREE PLACE DECIMAL	±.005

THREE PLACE DECIMAL	±.005
FOUR PLACE DECIMAL	±.0005

Hole Callouts



UNLESS OTHERWISE SPECIFIED:

DIMENSIONS ARE IN INCHES

TOLERANCES:

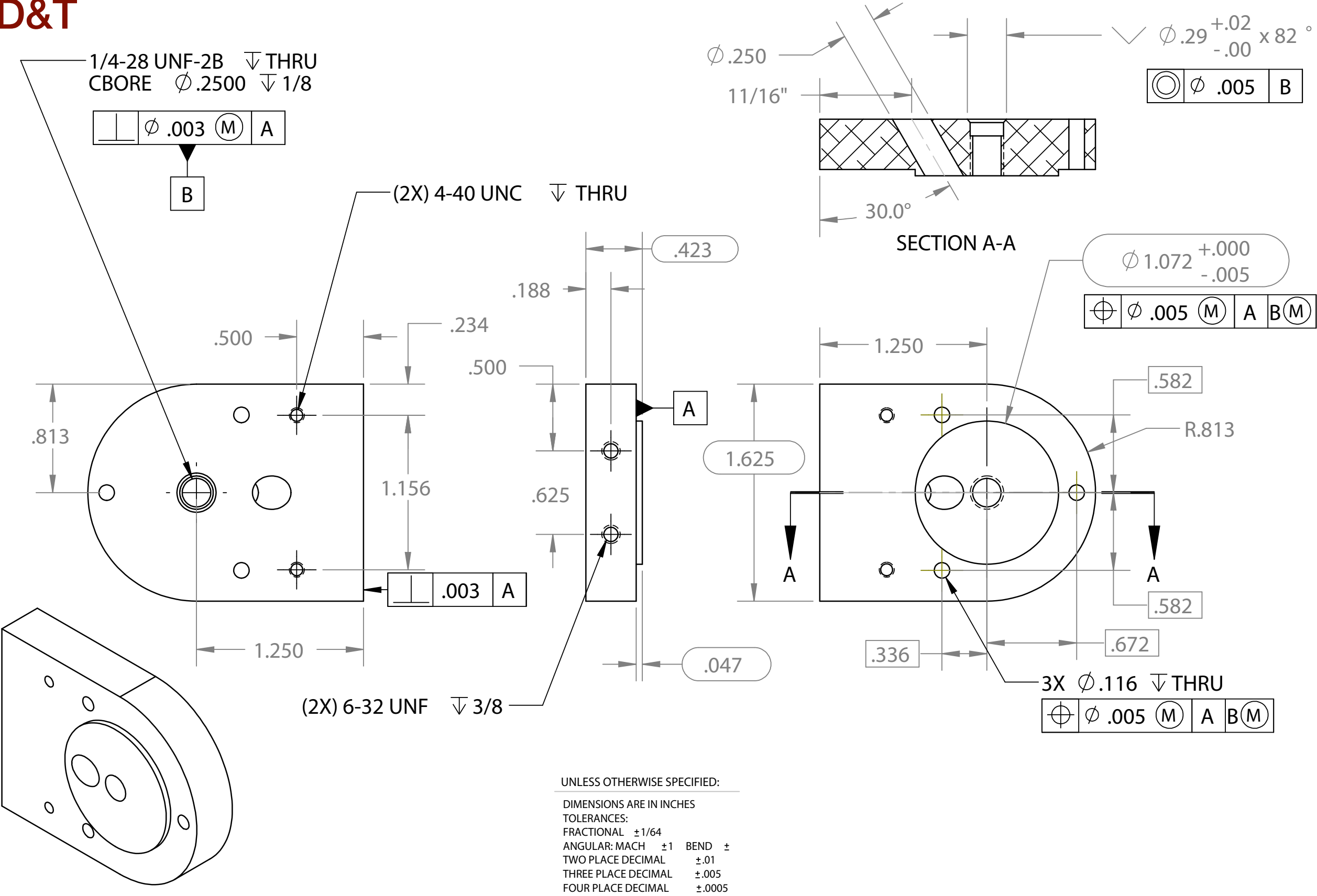
FRACTIONAL $\pm 1/64$

ANGULAR: MACH ± 1 BEND \pm

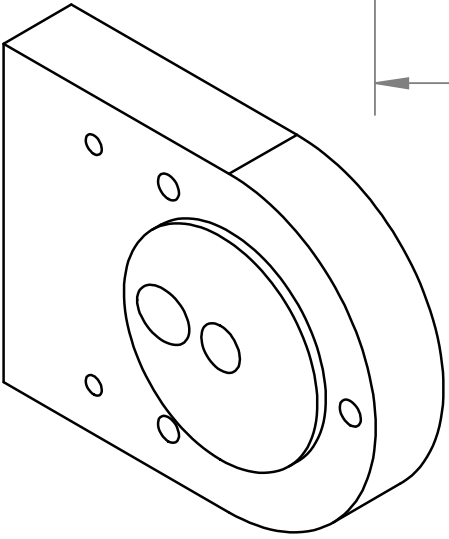
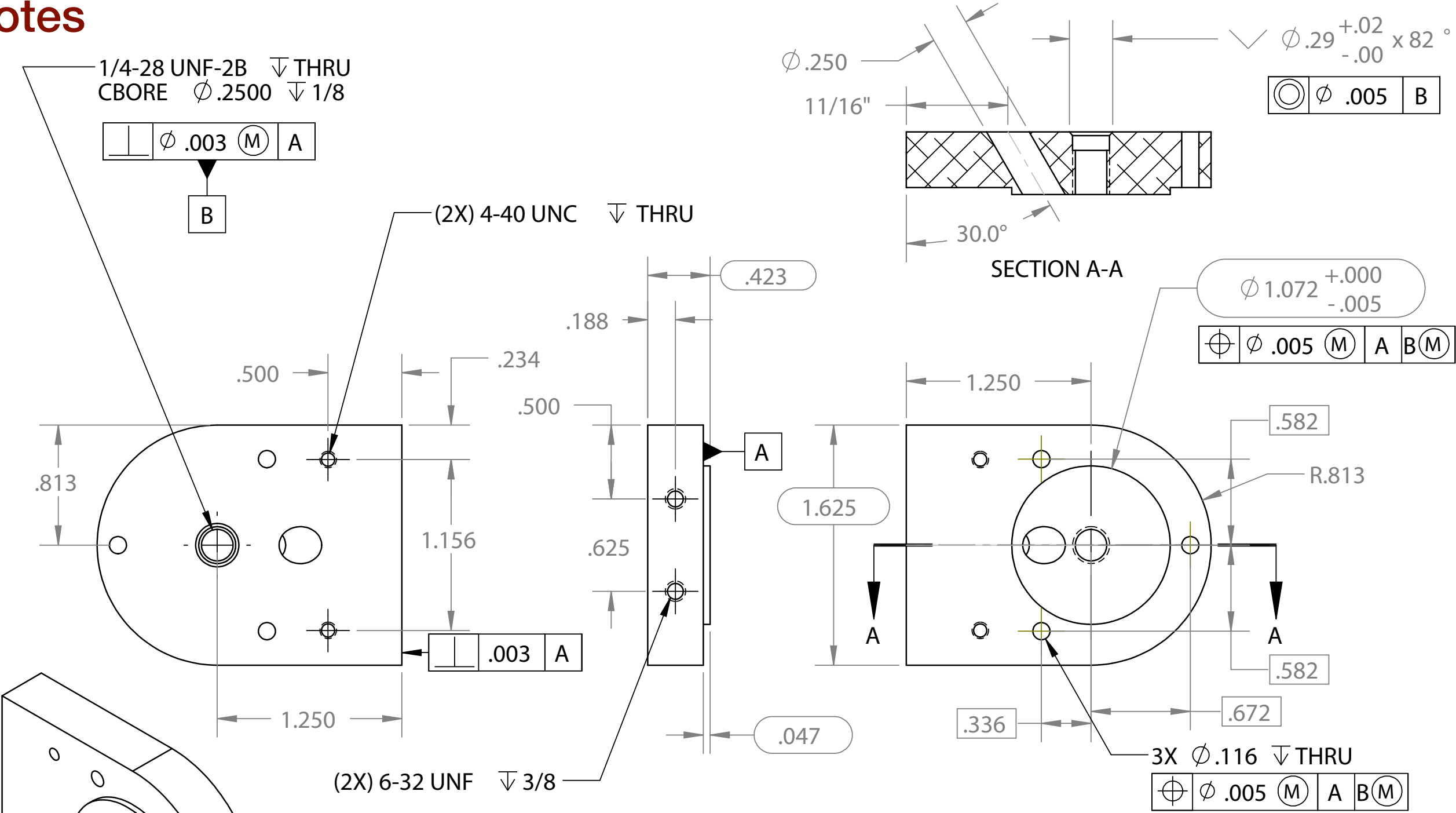
TWO PLACE DECIMAL $\pm .01$

THREE PLACE DECIMAL $\pm .005$

FOUR PLACE DECIMAL $\pm .0005$



Notes



PROPRIETARY AND CONFIDENTIAL

THE INFORMATION CONTAINED IN THIS DRAWING IS THE SOLE PROPERTY OF THE UNIVERSITY OF PENNSYLVANIA. ANY REPRODUCTION IN PART OR AS A WHOLE WITHOUT THE WRITTEN PERMISSION OF THE UNIVERSITY OF PENNSYLVANIA IS PROHIBITED.

		UNLESS OTHERWISE SPECIFIED:		NAME	DATE	TITLE: <h1>Mounting Block</h1>		
		DIMENSIONS ARE IN INCHES TOLERANCES: FRACTIONAL ±1/64 ANGULAR: MACH ±1 BEND ± TWO PLACE DECIMAL ±.01 THREE PLACE DECIMAL ±.005 FOUR PLACE DECIMAL ±.0005	DRAWN	GJ	9/1/11			
			CHECKED	GJ	9/1/11			
			ENG APPR.	JF	9/7/11			
			MFG APPR.			SIZE A		
		INTERPRET GEOMETRIC TOLERANCING PER:	Q.A.					
		MATERIAL AL - 6061 T6	COMMENTS: BREAK ALL EDGES AND SHARP CORNERS.					
		FINISH NONE						
NEXT ASSY	USED ON					DWG. NO. 201-01		REV A
APPLICATION		DO NOT SCALE DRAWING				SCALE: 1:1	WEIGHT:	SHEET 1 OF 1