


# Introduction to Mechanical Design

A close-up photograph of a metallic, fluted mechanical component, possibly a valve or a connector, resting on a black and white checkered surface. The component has a flared base and a flared top with a central opening. The background is blurred, showing other mechanical parts and a bright light source.

# Dieter Rams

Former Design Director, Braun

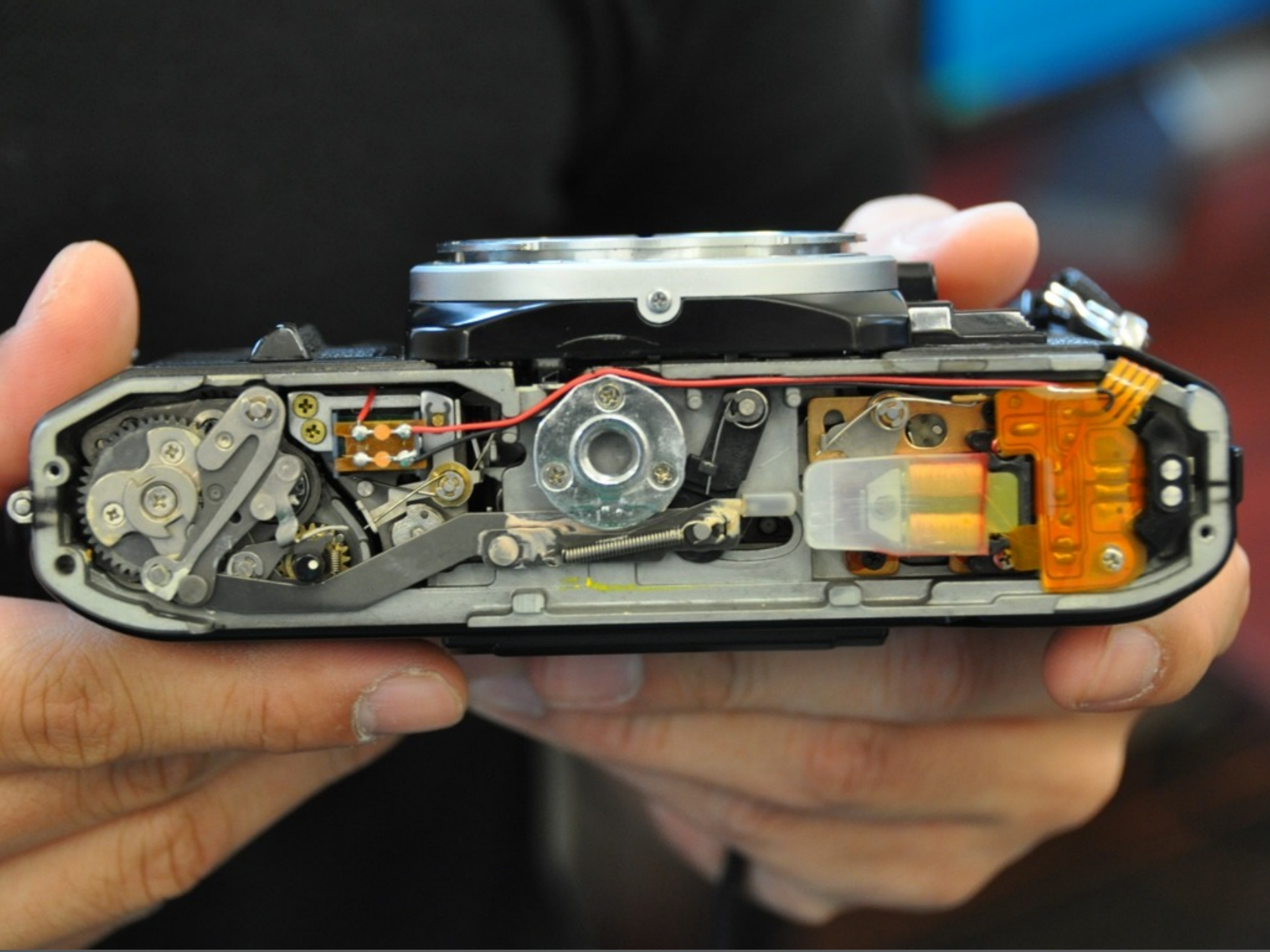




**Jonathan Ive**  
Senior VP Industrial Design, Apple











A

UPPER GREAT ROOM

Schedule...  
Plumber  
Drywall  
Brick layer  
Floor men