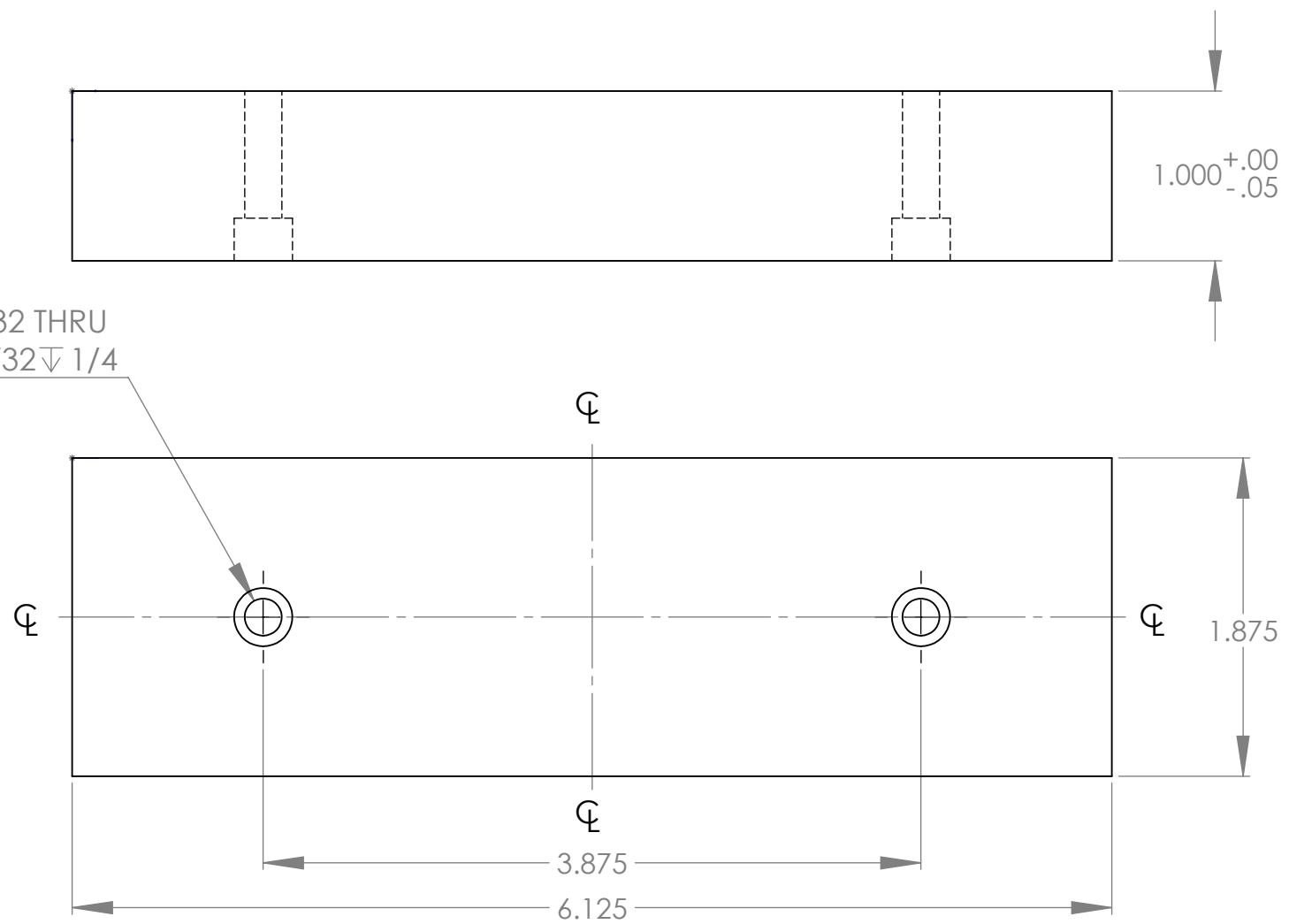


(2X) $\phi 7/32$ THRU
 $\square \phi 11/32 \nabla 1/4$



PROPRIETARY AND CONFIDENTIAL
 THE INFORMATION CONTAINED IN THIS
 DRAWING IS THE SOLE PROPERTY OF
 UNIVERSITY OF PENNSYLVANIA. ANY
 REPRODUCTION IN PART OR AS A WHOLE
 WITHOUT THE WRITTEN PERMISSION OF
 UNIVERSITY OF PENNSYLVANIA IS
 PROHIBITED.

		UNLESS OTHERWISE SPECIFIED:		NAME	DATE	TITLE: Soft Jaw					
		DIMENSIONS ARE IN INCHES	DRAWN	PW	9-6-12						
		TOLERANCES:	CHECKED	PSZ	9-7-12						
		FRACTIONAL ±1/64	ENG APPR.								
		ANGULAR: MACH ± 1 BEND ±	MFG APPR.								
		TWO PLACE DECIMAL ±0.05				SIZE A DWG. NO. 201-00 REV B					
		THREE PLACE DECIMAL ±0.005									
		INTERPRET GEOMETRIC	Q.A.								
		TOLERANCING PER:	COMMENTS: BREAK ALL EDGES AND SHARP CORNERS								
		MATERIAL									
		AL 6061-T6									
		FINISH									
NEXT ASSY	USED ON	NONE							SCALE: 1:1 WEIGHT: SHEET 1 OF 1		
APPLICATION		DO NOT SCALE DRAWING									